

MAKING STRUCTURES OUT OF REAL (OR CULTURED) STONE

Presented by John Meyers

June 17, 2006

ABTO General Meeting

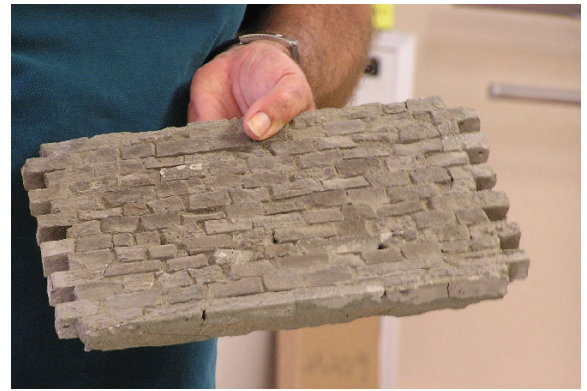
Gather the following equipment and materials:

- A 7" wet saw
- Utility knife
- A pair of tile nippers
- A pair of tin snips
- A small wire brush
- Styrofoam for making a mold
- Hardware wire for reinforcement
- Clear plastic wrap
- Quikrete Vinyl cement patcher

Blocks of rock or cultured stone cut to size

Steps:

1. Determine the width and height of your building.
2. Make a frame (box) out of Styrofoam for the side of the building. (Opposite sides will be the same)
3. Line the inside with clear plastic. Freezer paper works well because it has a sticky side.
4. Arrange the cut rock blocks inside the frame, staggering the joints, and leaving a dovetail effect on the sides.
5. Put a piece of hardware wire over the blocks and fit to frame.
6. Mix the concrete to a soupy consistency.
7. Pour the cement mixture inside the frame, covering the wire screen.
8. Vibrate the frame to settle the mixture. A sander or Saber saw held against the side of the frame works well.
9. Let dry for about 3-4 hours.
10. Carefully remove block wall from frame.
11. Use a utility knife and a wire brush to clean the front surface, exposing the texture of the rock.
12. Fill in any holes on the front surface with a soupy cement mixture.
13. Allow to dry about an hour.
14. Dip the wall in water and brush quickly to finish.
15. Repeat the process for the opposite wall, stacking the blocks on the side of the frame in the same dovetail pattern as the first wall.
16. For the other two walls, (if building is square) the same box can be used alternating the dovetail on the sides to fit the first two walls. Some scraping may be needed to fit sides together.



Finished wall



Step #3



Step #4



Step #5

**ABTO
Committee Heads**

Activities

Glenn Sampson

Jim Kangas

Modules

Ennis Thompson

Denis Conte

Phoenix Children's Hospital

Jerry McKenzie

Banner Desert Hospital

Bob Clark

Web Site

Mike Lewandowski

Other Positions

2008 Convention/Club

Correspondence

Mike Lewandowski
conv_secretary@cox.net

Raffles and prizes and Librarian

Tony Vacek

Photo Archivist

Jack Slinkard

Club Interaction Facilitator

Bob Rauperstrauch

Publicity

Dave Stone

Meeting Host Coordinator

Jim Kangas - East Side

John Meyers - West Side

Shirt, Badge, & Vest Coordinator

Jim Snyder

MODULES: Queen Mary Farewell

By Ennis Thompson



Two weekends ago, the Module Group made their final trip to The Big Train Show at the Queen Mary. Next year the annual show will be held in Ontario, CA at a large exhibition hall. The same venue will continue except the "earth shattering horn" won't sound at 12:00 noon and 3:00 PM. They are expecting more vendors, people, and participation, due to the creation of the new show.



ABTO puts on the last great show in front of the Queen!

A special thanks to all of the club members and wives who participated in the finale. Carol Kangas set up an itinerary for all of the wives to see on Saturday and Sunday. The Titanic exhibit on the Queen Mary was very interesting. I'd say the Aquarium was the most talked about event when everyone came back from these tours.

Three nightly dinners were very interesting and fun too. Many people attended the USA Dinner Show on the ship, while the rest of the people went to a dessert utopia. Terry Haas didn't win anything this year at the dinner.

I personally felt the modules looked better than in any other show. Again, thanks for all of the help, and I hope everyone didn't spend too much of their money on their new train items and eats!

Hints and Tricks

By Gerry Pfeiffer

About three months ago, I was struggling to cut cement board bases to use under my houses on my layout. I tried to cut them on my table saw, and with a hand held saw, without success. The teeth on the table saw were not fine enough to work properly and the dust was a problem. The hack saw did not cut the cement board very straight and the teeth on the saber saw were gone after 3-4 feet.

I decided to get an extra fine blade for the table saw for about \$25, and live with the dust! While at Home Depot, I spoke with a ceramic tile installer who suggested using a ceramic blade for the saber saw. I purchased a \$7 blade (Bosch #T130RF1 30 grit) and it worked perfectly. So far I have cut two 2' x 4' cement boards into 12-14 pieces. The blade cuts through the 1/2" board straight and does not show much ware.



Used blade



New blade

SUMMARY OF UNOFFICIAL BOARD MINUTES

July 1

All board members were present.

Guests were: Denis Conte, Tony Vacek, Ennis Thompson.

Minutes of the last meeting read by Roy Towne and approved.

Treasurer's report read by Don Halver and approved.

Old Business:

Activities report: Nothing to report

Module report: Ennis Thompson—Modules have been invited to go to Las Vegas for the '07 National Garden railway Convention. Exciting news!

Phx. Children's Hospital: Jigstone retaining walls have been installed at both ends of the tunnel

Banner Desert Hospital: Bob Clark - Bob is still looking for help staffing the work load at Banner Desert.

Convention: Rich Hull - Many committee members are headed to Santa Clara for the '06 Convention. Sept. 23 is the next quarterly meeting for the '08 convention .

Newsletter: Sandy - No issues.

Raffles: Tony Vacek— A new tank car was purchased at the Queen to raffle off.

Web Site: Mile Lewandowski - No updates.

New Business:

Ennis to coordinate all Christmas open houses with standard time and dates for those who have contacted him, and want to participate. Booklet for tours may be printed with descriptions of layouts.

City of Gilbert's new park has a railroad theme. Ennis to contact city offering ABTO as resource in the design of the park.

Discussion of Club direction after the 2008 convention. Several options were presented, recognizing the club is both a social organization, and a hands-on, project oriented group. While no firm decisions were made, all agree that the club must remain many things to many people.

About The Newsletter

Although it's hard to get long time members to switch to email, the new members really like the email version.

I appreciate all the comments that continue to be sent to me. For Dennis Serrine, Sweet Alyssum does not do well over 90 degrees, but I'm glad he reads the newsletter! To all of you, read ALL the newsletter. It has the maps to meetings, what to bring to the meetings, and many answers to those questions about club issues that are frequently asked. We try to include all the news.

Thanks for the support.

Sandy - Newsletter Editor



BULLETIN BOARD

Were you busy buying trains at the Queen Mary?

Sell your old trains here.

No charge to members.

We have new members looking for trains, and "train stuff"

Sell your stuff here!

What's Cooking !

Chocolate Rice Crispy Cake
From Gail Halver - this is really good!

Spray Bundt pan with non-stick spray.

Melt in microwave on high for 1 minute:

4 ounces semisweet chocolate pieces

2 Tb butter or margarine

Stir once during heating.

When done, blend until smooth.

Add to mixture:

1 bag mini marshmallows

Heat in microwave for 1 minute until marshmallows

Are melted and mixture is smooth.

Add to mixture:

6 cups crispy rice cereal

1 cup salty dry-roasted peanuts

1 cup M&M's Mini Baking Bits

Stir until coated.

Transfer mixture to Bundt pan, pressing together with fingers.

Let stand one hour. Un-mold and slice.



Plant of the Month-July
Gazinia

Hardy groundcover with early, showy flowers in many different varieties of colors. Flowers close at night and in cloudy weather. Grows to 8" high, and 8"-10" wide. Sun tolerant, this plant is a good addition to any railroad.

Prize Winners at the Queen Mary



There are many contests and prizes offered at the Queen. This 1st place winner is our very own Tony Vacek. Tony won first in both "Whimsy" and "Best of Show."



Car with shed by Glenn Sampson shows another fine example of craftsmanship in ABTO. Glenn took 3rd place in the "Kit bash" category. Congratulations!

Just a Few corrections this month!

Please make Additions/Corrections to Your Roster

Rich and Sharon Hull have moved!

Fred Creasy's

Bill and Jane Davis have a new Email

Email:

Darrell & Jenny Oaks

Please change! (That's how I received it!)

Where in the World Are Al and Linda?



The internet is an expensive option for the Wendlers, but we did receive news on July first. "We are currently in Cortina, Italy in the Dolomite Alps because it is really hot elsewhere in Italy. 90 degrees and counting in a land without air conditioning is not my idea of fun. But the scenery is great up here where it's cool. Next stop, the LGB birthday party." Linda and Al

Banner Desert Hospital

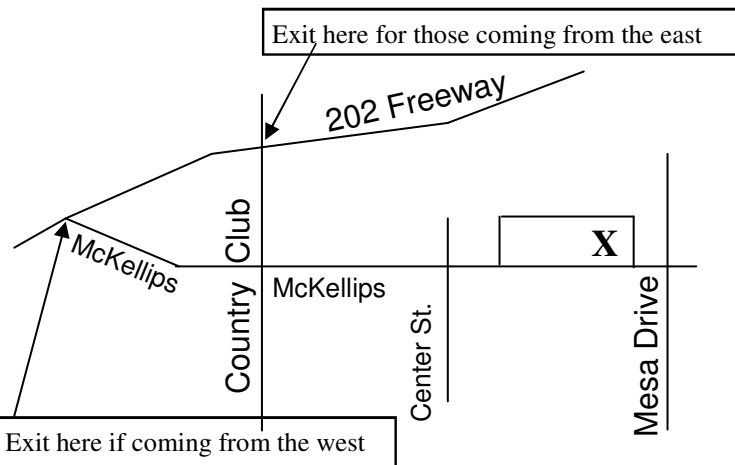
Bob Clark is looking for members to help with trains (mostly cleaning track one day a week) at the hospital. Please call Bob to help out:

Stan Cornforth has misplaced his Airwire 900 transmitter—new with LED display. Call Stan if you have it. He left it at someone's home when running trains.

We have been asked about the trip to Durango
This trip has been POST-PONED until next year.

We have been asked which trip is still on.
The Tehachapi Loop trip is being planned and has been expanded to four days.

September 27 - 30
Call Rich Hull,



ABTO July 15 General Meeting
8:30am to 11:30 am
M & M Mobile Home Villa
Recreation Room
320 E. McKellips Rd.

Members are asked to bring breakfast pot luck to go with pancakes.

Members are also reminded NOT to park in the first two spaces after the handicap parking, as this is reserved for residents. General meeting and demonstration to follow breakfast.

Arizona Big Train

ABTO OBJECTIVES

Membership in Arizona Big Train Operators is open to anyone with an interest in gardening and creating, constructing, and operating large scale model railways. At our meetings, items of mutual interest associated with the hobby are discussed and demonstrated.

Our members represent a wide variety of interests ranging from gardening, collecting trains, and model building, to operating trains in the garden railroad environment.

Meetings are typically held at member's homes, where they have the opportunity to showcase their railway creations.

Meetings are usually held on the 3rd Saturday of the month.

ABTO MEMBERSHIP INFORMATION

Membership fee is \$35 per family, per year, and entitles you to one vote per family membership.

Membership entitles you to attend all meetings and events and receive the monthly ABTO newsletters and one name badge. Additional badges may be purchased for \$7.00 each.

ABTO BOARD MEETING INFORMATION

Board meetings are usually held on the first Saturday of the month.

Board meetings are open to members who are current on their dues and have an item for the agenda. **If you plan to attend, call a board member to confirm location, time and date.**

ABTO NEWS CONTRIBUTIONS

Members are encouraged to contribute articles, letters, illustrations or photographs related to garden railroading to include in the newsletter. Items may be used at a later date.

ABTO Members who have hobby related items for sale or trade may submit an advertisement for publication at no charge using four lines; Name, Item, Phone # and Email.

Submissions must be in to the editor by the 1st Saturday of the month by US Mail or Email using WORD.

ABTO will also accept business card sized advertisements for \$10.00 a month. **Advertisements must be submitted with payment, (check to ABTO) to the newsletter editor by U.S. mail, by the first Saturday of the month. Editor reserves the right to decline ads.**



ABTO Newsletter Editor
Sandy Rauperstrauch

To:

**Next meeting, Saturday, July 15
M & M Mobile Home Villa - Mesa, Arizona**