

***Tehachapi Plans Finalized
Please Make Reservations Now!***

Plans are set for the annual trek to California to see several of the most famous railroad scenes in the United States. One more day has been added to this year's trip. We will depart early Wednesday morning, September 27, and return early evening on Saturday, September 30.

The group will travel by rented vans and stay in hotels, two to a room. If you wish to room alone, you will absorb the total cost of the room. Hotel reservations will be made for the group. Lodging costs are expected to be \$50-\$60 per person, per night. The cost of the van last year per person was approximately \$60 plus your share of fuel. You will see the Tehachapi Loop, the most famous loop in all railroading. We will travel to Caliente to see the famous Horseshoe curve. From there we will spend time at Cajon Pass where most of the trains leave the Los Angeles Basin. Plans also include a trip to San Val, an excellent Garden Rail exhibit at a nursery in Poway, CA, and an excellent Layout in Riverside, CA. We will not be seeing the layout at the Fairplex or the Living Desert in Palm Springs. This is the third year for this event with a lot of fun, conversation and just good camaraderie. Please keep in mind restroom facilities are limited or non-existent at these sites.

If you are interested, please contact Rich Hull immediately.

Please make your decision by Tuesday, September 5.

Wedi Board

Part of Bob's presentation at the July meeting was showing Wedi Board for use on buildings and bases. It is a 1/4 or 1/2 inch thick foam core with a thin fiberglass coating on both sides. We regret that the convenient location in Tempe has moved to Oklahoma. There is a source for this product in Phoenix. D & D Tile on 4802 N. 7th Ave does carry it, as it is a tile substrate. Phone # is 602-279-2989. Wedi Board is light weight, easy to cut, and holds up in all weather.



Thanks Roy Town for sending this picture of Bill Nagel at the Queen Mary, wearing Jerry McKenzie's famous chicken hat! What we won't do for trains!

Announcement!

Meet and greet Mike Wolfe, president of MTH, at The Train Depot 755 E. McKellips - Mesa Saturday, August 12 11:00am - 5:00pm

Photo Contest

Don't forget to send your photos to the newsletter editor for the photo contest. Last date to receive photos is Oct 1. Did we mention a prize for 1st place? Photos must include a train, G-scale or proto type.

Hands-on Workshop - Building a Train Station

There has been some interest shown to do a hands-on workshop in constructing a **real stone and cement station with tin roof.** John Meyers has agreed to hold such a workshop in two sessions at his home. In the first session, participants will prepare the form, cut the stones, and pour two walls. Between sessions, two more walls will need to be done. In the second session, the building will be put together and the roof added. **\$30 covers all materials, use of tools, expert instruction and lunch.** During the down time of the sessions, participants may choose to run their trains.

The class will be limited to 5 participants.

Email John Meyers at **jtprmeyers@cox.net** if you are interested.

Dates are: October 14th and November 11th

Time: 9:00am - 1:00pm

3235 W. State Ave. Phoenix, AZ 85051

**ABTO
Committee Heads**

Activities

Glenn Sampson - 602-938-9752

Modules

Ennis Thompson

Denis Conte

Phoenix Children's Hospital

Jerry McKenzie

Banner Desert Hospital

Bob Clark

Web Site

Mike Lewandowski

Other Positions

2008 Convention/Club

Correspondence

Mike Lewandowski
conv_secretary@cox.net

Raffles and prizes and Librarian

Tony Vacek

Photo Archivist

Jack Slinkard

Club Interaction Facilitator

Bob Rauperstrauch

Publicity

Dave Stone

Meeting Host Coordinator

Jim Kangas - East Side

John Meyers - West Side

Shirt, Badge, & Vest Coordinator

Jim Snyder



“TRAINS FOR CHRISTMAS TOUR”

By Ennis Thompson

Recently the ABTO executive board decided to promote a “Trains For Christmas Tour ” of club member’s layouts. Member’s layouts will be open December 8th, 9th, & 15th, 16th from 6:00-9:00 P.M.

The reason for early commitment is the listing of our show in the GARDEN RAILWAYS magazine. Our tour will be advertised on the [http://:azbigtrains.org/](http://azbigtrains.org/) web site or contact Mr. Gerry Pfeiffer for more information.

Presently, these member’s homes will be listed on the web site: Janet & Rodney Benner, Dana & Dennis Busby, Herta & Bill Nagle, Gerry Pfeiffer, Lizbeth & Dennis Serrine, Carole & Ed Dunshie, Marcia & Ennis Thompson, Patience & Dan Hoag, plus Adrienne & Terry Haas. Any other people interested in opening their layouts, please call Ennis

Donation boxes will be set up at all sites with donations being split between the Phoenix Children’s Hospital Fund and ABTO’s General Fund.

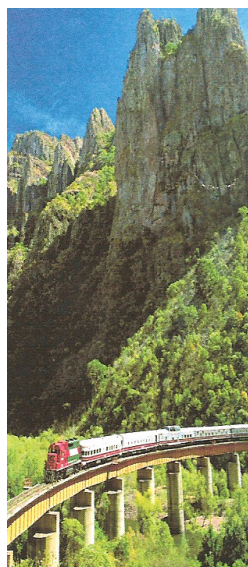
Note: Many other members were interested in opening their layouts, but due to construction or remodeling, their layouts weren’t ready.



Photo by Mike Lewandowski.

Eggliners for Children

Jerry and his modules were a hit at the 2006 convention. Kids enjoyed Jake, the tortoise, Minnie, the mouse, and a bowl full of fish as much as the speedy eggliners. It was a great honor that he was invited to show his trains and we’re all proud of you Jerry!



Sierra Madre Express

Experience Mexico’s Copper Canyon by Private Rail Car

“Garden Railroaders”

Group Discount SAVE \$1400 couple

September 7 to 14, 2006

All Inclusive 8 days, 7 nights - \$2595*pp

*Hotel Accommodations, Train Sleeper, Meals, Food & Beverage
Tours & Sightseeing, Bilingual Escorts, Taxes, Standard Gratuities AND MORE!*
*Omit pre & post tour hotel accommodations & save \$100 pp

Call toll free 800-666-0346 or 520-747-0346

SUMMARY OF UNOFFICIAL BOARD MINUTES

August 5

All Board members were present except Don Halver.
 Guests were: Denis Conte, Tony Vacek, Ennis Thompson,
 Bob Clark, Sandy Rauperstrauch and Jack Slinkard.
 Minutes of the last meeting read by Roy Towne and approved.
 Treasurer's report read by Glenn Sampson and approved.

Old Business:

Activities - Glenn Sampson: Follow up with the work on Tim Schlaw home.

Modules - Ennis Thompson: No shows 'til fall. Trailer is being reorganized. Need to work on track.

Phx. Children's Hospital - Bob reporting for Jerry McKenzie: Logo decals are being made for the F7. Need more lights on both villages.

Banner Desert Hospital - Bob Clark: Bob is still looking for help staffing the work. Meeting next week with hospital and ABTO to clarify track maintenance and operation issues.

Convention - Rich Hull: Pre meeting to critique the BAGRS convention and review action items for the September meeting.

Newsletter - Sandy : No issues.

Raffles: Glenn Sampson has taken over the raffles from Tony Vacek.

Web Site - Mile Lewandowski: Not present. Comments on the website were: unable to fit to screen, (too big,) unable to print Bylaws, need history of club, take out membership, "under discussion" - membership will not be on Web.

New Business:

Gerry Pfeiffer again, talked about his membership survey.

Ennis to report next month on Gilbert Railroad Park.

Want to know what's going on behind the scenes in ABTO?

Read the Board Meeting Minutes for updates on the latest issues.

ABTO Roster is published twice a year, March and November

It's in the Bylaws!

About The Newsletter

Doug Atherton, thanks for the compliments!
 Rob Trygg has changed to email only for the newsletter — thanks again! Unless you do not have a computer or printer, please consider email only.

I am asked all the time, "where 's the next meeting?" or "am I supposed to bring something?" It's all here in the newsletter! All the news and Info! I try to put it in the same place, so it 's all easy to find.

Sandy - Newsletter Editor - braup@cox.net 

BULLETIN BOARD

Are you interested in buying a home in a gated community in NW Phoenix, complete with a G-scale railroad? Call Dave Winkler: 623-975-5487

What's Cooking !

BBQ beans

From Marie Creasy - everyone loved them!

- 3 large cans pork and beans, drained
- 1 lb. bacon
- 3 large onions, chopped
- 2 lg. bell peppers, chopped

Saute' bacon. Remove with slotted spoon temporarily and add onions and peppers and cook until partially done. Remove some of the cooked fat.

Add:

- 1 box dark brown sugar
- 1/4 -1/2 cup vinegar
- 1/3 cup catsup
- 1/2 T dry mustard & the drained beans

Optional: chopped celery, 1 T Worcestershire sauce.

Bake 325 degrees for 2-3 hours. Longer and slower if recipe is doubled.

Good for potlucks and entertaining a crowd!

Enjoy!

Is it an Annual,

Biennial or a Perennial?

Local climatic conditions, development of new cultivars, and new uses for specific garden flowers have blurred the distinctions among annuals, biennials, and perennials. Annuals have traditionally been referred to as plants that complete their life cycle in one growing season. Some perennials that bloom quickly (verbena, Jerusalem cherry) are grown as annuals and discarded at the end of one season. Some of our so-called annuals (begonias, impatiens, snapdragons) are actually perennials in warmer climates or mild winters.

From the NC State University Horticultural News.



Where in the World Are Al and Linda?

An Update from Linda Wendler in Germany

Four ABTO members (Al and myself, Dan Hoag, and Ed Fishencord) came to Germany to attend the LGB 125th Birthday Festival. Streets in the area around the factory were blocked off to allow for setting up numerous tents and outdoor displays. Prototypes of some of the small LGB steam locos were brought in so you could see what they look like in full scale. (Dan might remember the names of the locos but we don't, sorry.) Parts of the factory were open for self-guided tours. There were lots of other Americans there as well as many people from Germany, Denmark, Italy, England, and other parts of Europe. We were amused by the 'wild west saloon' complete with gunslingers and dancing girls that was one of many eating and drinking areas set up for the event. The Mexican restaurant offered currywurst, which is a weird German specialty. I was fascinated by the whole beef on a spit (not a side of beef, the whole thing, minus head) which made great sandwiches. Not Texas BBQ, but very tender.

There were venues all over the city. Tour attendees could visit the DB Museum, the Nuremberg Toy Museum with its special room of Lehmann toys, the street car museum which included a ride on a vintage streetcar, and the Regio repair facility. One of the big European vendors named Vedes had a separate location with many great layouts set up. We all rode the steam train from the main station and it was a pleasure to get a first class seat and a smooth ride, unlike the typical narrow-gauge American experience. Ed also took a longer steam train excursion that went to the city of Bayreuth, north of Nuremberg. Ed signed up for a steam train tour of Austria and left this morning, so he should be able to give you a report on that when he returns.

Banner Desert Hospital

Bob Clark is still looking for members to help with trains (mostly cleaning track one day a week) at the hospital. Please call Bob to help out:

Stan Cornforth has misplaced his Airwire 900 transmitter—new with LED display. Call Stan if you have it. He left it at someone's home when running trains.

Welcome new ABTO members

Please make Additions and changes to Your Roster

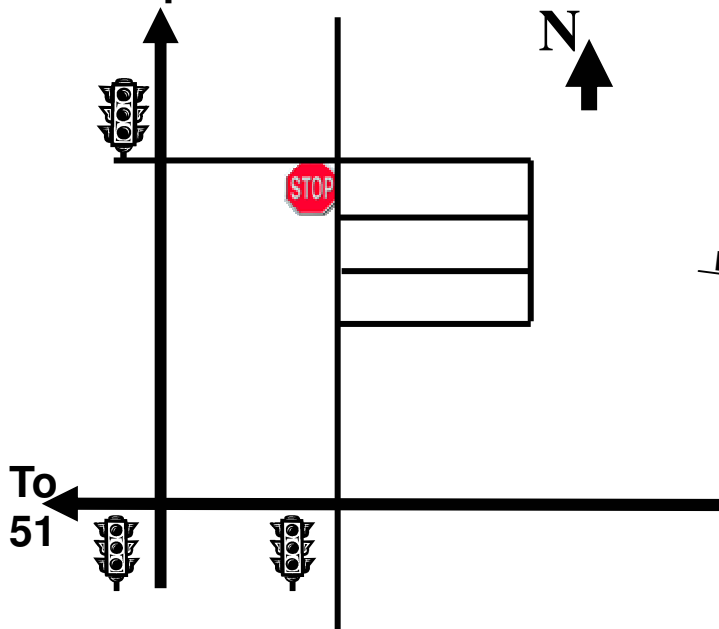
John & Sandra Aichinger

No G-scale layout yet, just O-gauge.

Dave Stone new email address:

Rich & Sharon Hull

To Loop 101



ABTO General Meeting—Indoors!

August 19

**“Grandpa Choo-Choo’s RR”
Ed & Mary Fishencord**

Note the time. → **12 Noon to 3 PM**

**Sub Sandwiches and beverages
provided by hosts.**

**Attendees are requested to bring
items for pot luck luncheon
and chairs.**

Arizona Big Train

ABTO OBJECTIVES

Membership in Arizona Big Train Operators is open to anyone with an interest in gardening and creating, constructing, and operating large scale model railways. At our meetings, items of mutual interest associated with the hobby are discussed and demonstrated.

Our members represent a wide variety of interests ranging from gardening, collecting trains, and model building, to operating trains in the garden railroad environment.

Meetings are typically held at member's homes, where they have the opportunity to showcase their railway creations.

Meetings are usually held on the 3rd Saturday of the month.

ABTO MEMBERSHIP INFORMATION

Membership fee is \$35 per family, per year, and entitles you to one vote per family membership.

Membership entitles you to attend all meetings and events and receive the monthly ABTO newsletters and one name badge. Additional badges may be purchased for \$7.00 each.

ABTO BOARD MEETING INFORMATION

Board meetings are usually held on the first Saturday of the month.

Board meetings are open to members who are current on their dues and have an item for the agenda. **If you plan to attend, call a board member to confirm location, time and date.**

ABTO NEWS CONTRIBUTIONS

Members are encouraged to contribute articles, letters, illustrations or photographs related to garden railroading to include in the newsletter. Items may be used at a later date.

ABTO Members who have hobby related items for sale or trade may submit an advertisement for publication at no charge using four lines; Name, Item, Phone # and Email.

Submissions must be in to the editor by the 1st Saturday of the month by US Mail or Email using WORD.

ABTO will also accept business card sized advertisements for \$10.00 a month. **Advertisements must be submitted with payment, (check to ABTO) to the newsletter editor by U.S. mail, by the first Saturday of the month. Editor reserves the right to decline ads.**



ABTO Newsletter Editor
Sandy Rauperstrauch

To:

**Next meeting, Saturday, August 19
Mary & Ed Fishencord - Phoenix, Arizona**